



STATE LIBRARY  
VICTORIA  
What's your story?

Audio**Studios**

Studio 2b  
**User Guide**

# Contents

Introduction.....	3
Equipment Overview .....	3
Important File Storage Info .....	3
Working with the RME Interface .....	4
Headphone Levels .....	4
Setting Levels/Mic Gain .....	4
Phantom Power .....	4
Finishing your session .....	5
Troubleshooting .....	5
Buffer size .....	5

## Introduction

Please Note **we cannot provide on demand technical support for our studios**, please refer to this guide for any assistance you may need during your session. For feedback and further questions email [studios@slv.vic.gov.au](mailto:studios@slv.vic.gov.au)

## Equipment Overview

1 Mac Mini with Pro Tools

2x Shure SM7B Microphones

1x RME audio interface

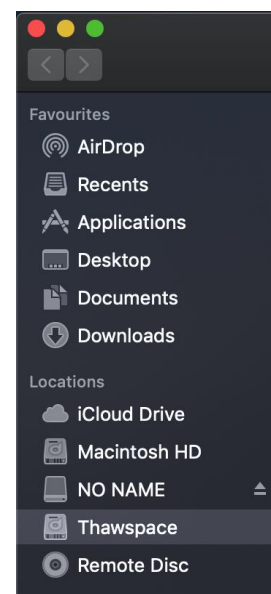
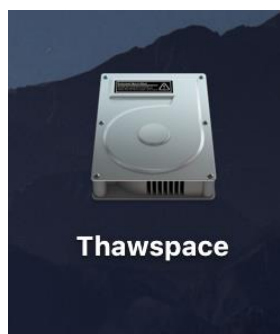
2x Sennheiser HD280 Headphones

See the "[Studio 2b QuickStart Guide](#)" to begin working with this equipment.

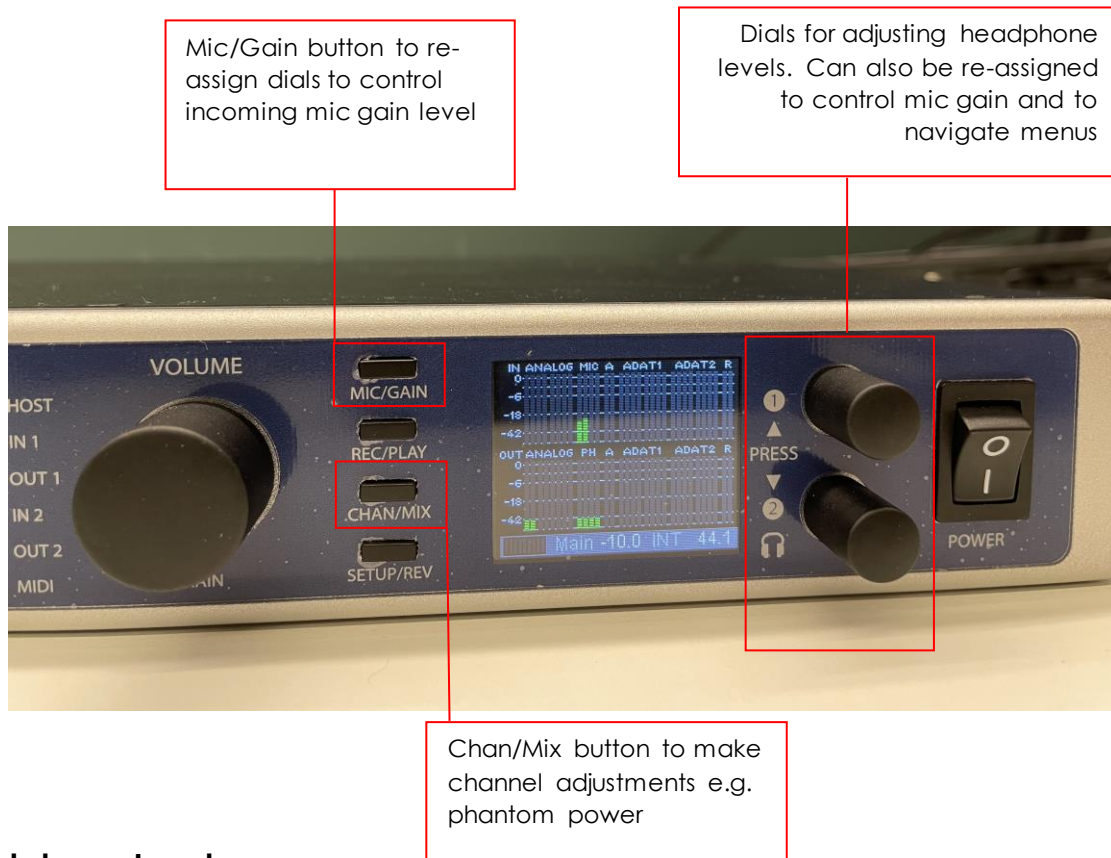
## Important File Storage Info

The Library's public computers, including those in the studio, use a file cleaning system to prevent accidental changes to critical settings and user data retention. Each time the mac in the studio is restarted the file cleaning system will revert any settings changes and delete any files stored in documents, desktop etc. It is therefore extremely important that you copy your files to an external storage device before leaving your session.

An exception to this behaviour is the "**Thawspace**". This location of the Mac will **retain files** after a restart but is not intended for long term storage and will be **cleared regularly**. It is highly recommended that you place any files for your session in Thawspace (inc your session folder) and then copy them to external storage and clear them from Thawspace at the end of your session.



## Working with the RME Interface



### Headphone Levels

To adjust the level in headphones for monitoring, use the dials next to the power switch

### Setting Levels/Mic Gain

To set the right recording levels for the provided microphones (or any connected source):

1. Press **Mic/Gain**
2. The same dial used for headphone level will now control mic level. Use the dials to adjust the incoming level

### Phantom Power

Phantom power supplies 48v of power to passive condenser microphones. Please note phantom power is enabled by default on the first 2 channels.

To enable or disable phantom power for a channel.

1. Press **Chan/Mix**
2. Use the top dial to select the correct channel number
3. Press in the bottom dial (which doubles as a button) to navigate down to **+48 Volt**
4. Turn the **bottom dial to toggle** on or off

## Finishing your session

When your session time is nearly over it's time to save your work and copy it to your external storage device.

1. Connect your device to the USB hub. Once it has mounted on the Mac you can copy your session to it.
2. If your session is finished, you can choose **File>Bounce to Disk** to create a final mixdown of your work. If you're unsure about which audio format to choose it's best to leave it on the default Wav and leave the default location as the bounce folder inside your session folder.
3. Save your session **File>Save** then navigate to your session in the finder and drag and drop the whole session folder to your external device.  
**PLEASE NOTE: Do not choose Save as to copy to your external device as this will result in an empty duplicate session**
4. Once your session is safely copied to your device delete it from the thaw space partition on the Mac.



## Troubleshooting

### Buffer size

If you experience system overload messages or pops and clicks it may be necessary to adjust the system buffer size. To adjust go to **Setup>Playback Engine** and increase the buffer size. PLEASE NOTE: Increasing buffer size can result in latency i.e., an audible delay with the audio but lowers the stress on the computer allowing larger sessions with more effects etc.

