

Studio 2a User Guide

Contents

Introduction.....	3
Equipment overview	3
Important file storage info	3
Pro Tools template.....	4
Track templates.....	4
Finishing your session	5
Troubleshooting	6
Buffer size.....	6
Connection issues.....	6

Introduction

Please Note **we cannot provide on demand technical support for our studios**, please refer to this guide for any assistance you may need during your session. For feedback and further questions email studios@slv.vic.gov.au

Equipment overview

Equipment provided in this room:

1x Mac Mini with Pro Tools Ultimate

1 x Avid S3 control surface with Avid Dock

1x iPad with Avid Control app

2x Genelec 8030 monitor speakers

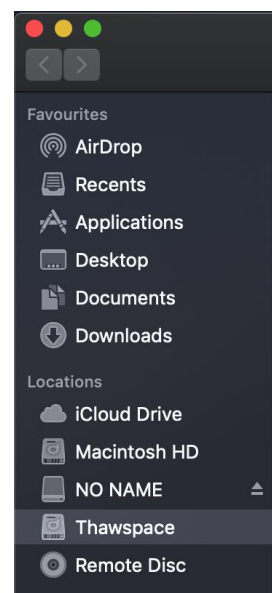
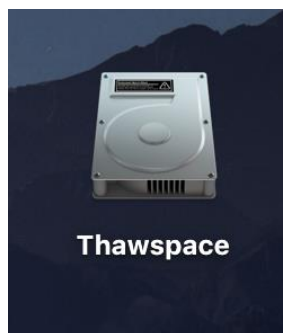
1x Sennheiser HD280 headphones

See the [studio 2a quick start guide](#) to begin working with this equipment.

Important file storage info

The Library's public computers, including those in the studio, use a file cleaning system to prevent accidental changes to critical settings and user data retention. Each time the mac in the studio is restarted the file cleaning system will revert any settings changes and delete any files stored in documents, desktop etc. It is therefore extremely important that you copy your files to an external storage device before leaving your session.

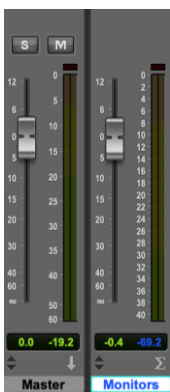
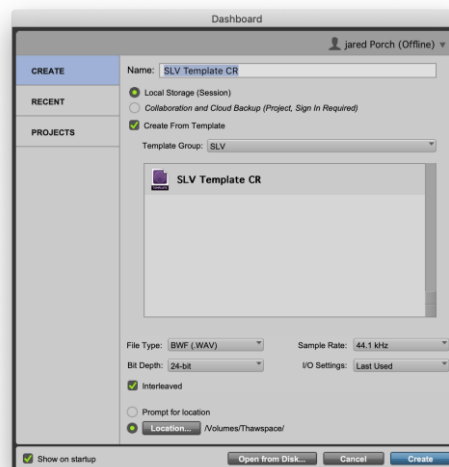
An exception to this behaviour is the "**Thawspace**". This location of the Mac will **retain files** after a restart but is not intended for long term storage and will be **cleared regularly**. It is highly recommended that you place any files for your session in Thawspace (inc your session folder) and then copy them to external storage and clear them from Thawspace at the end of your session.



Pro Tools template

When using this room, it is important to utilise the pre-configured Pro Tools Template. This is primarily to allow proper control on the Avid control surface but also saves time on session set up.

To begin mixing or editing, create a new session from the template (SLV Template CR) and then import your files by choosing **File>Import>Audio** or by dragging and dropping into the Pro Tools window.



To allow proper monitor control from the control surface the master fader named **Monitors** is for controlling the **monitoring level in the room only**. The auxiliary fader named **Master** is where all tracks need to be routed to be summed together and must be chosen as the source when bouncing a session.

Track templates

With this system in place any new channels created will need to be assigned to output to Master (aux 7-8) instead of the default – Monitor (out 1-2). To make this easier for users we have created track templates to use when creating new audio tracks.

To use a track template

Track templates created are in a category named SLV and are as follows:

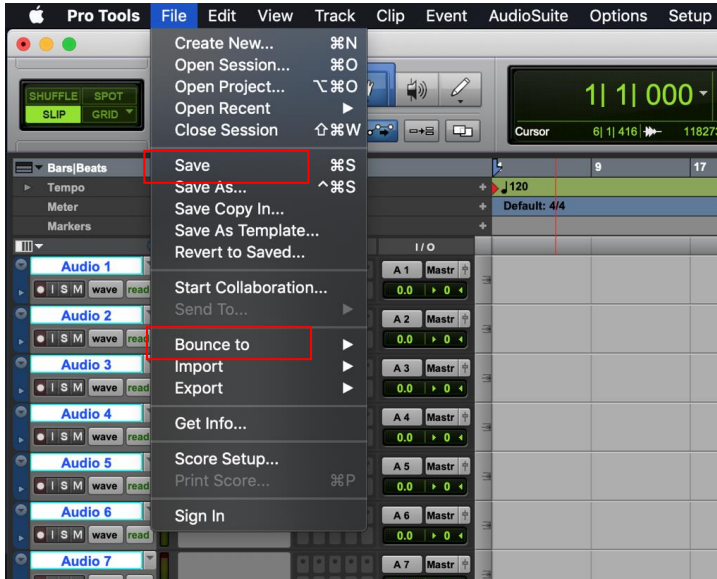
1. SLV Audio – Mono audio track
2. SLV Audio ST – Stereo audio track
3. SLV Inst – Instrument track
4. SLV Aux – Mono auxiliary
5. SLV Aux ST– Stereo auxiliary



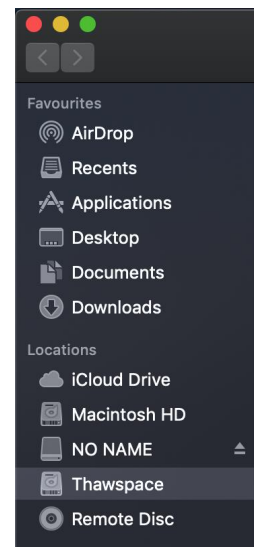
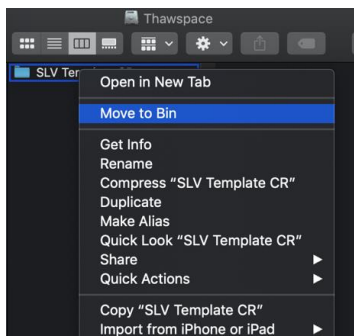
Finishing your session

When your session time is nearly over it's time to save your work and copy it to your external storage device.

1. Connect your storage device to the USB hub (pictured). Once it has mounted on the Mac you can copy your session to it.
2. Save your session using the save command from the file menu (File>Save). **Please note: Do not choose Save as to copy to your external device as this will result in an empty duplicate session.**



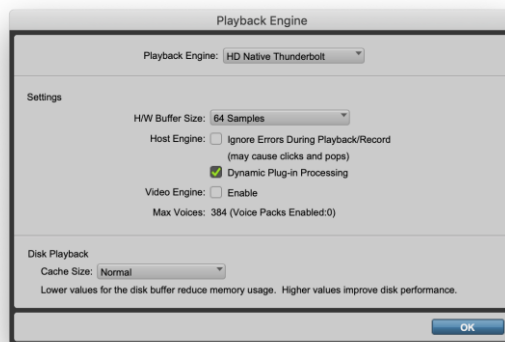
3. If your session is finished, you can also choose **File>Bounce to Disk** to create a final mixdown of your work. If you're unsure about which audio format to choose it's best to leave it on the default Wav and leave the default location as the bounce folder inside your session folder.
4. Navigate to your session in the finder. You will find your session in the Thawspace which is accessible in the Finder sidebar under locations.
5. Drag and drop the whole session folder to your external device which will also show in the locations sidebar
6. Once your session is safely copied to your device delete it from the thaw space partition on the Mac by right clicking and choose 'Move to Bin'.



Troubleshooting

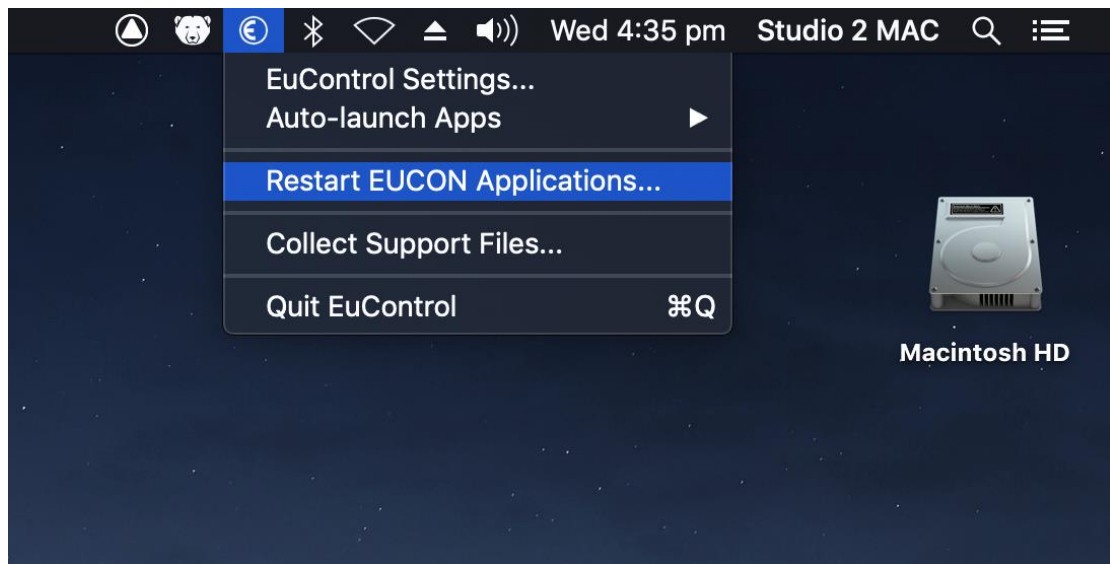
Buffer size

If you experience system overload messages or pops and clicks it may be necessary to adjust the system buffer size. To adjust go to **Setup>Playback Engine** and increase the buffer size. **Please note:** Increasing buffer size can result in latency i.e., an audible delay with the audio but lowers the stress on the computer allowing larger sessions with more effects etc.



Connection issues

If the Avid control surface or iPad are not connecting properly to Pro Tools you may need to restart the Eucon control applications which handle the connection. Click on the Eucon icon in the menu bar and click "Restart EUCON Applications".



Please note: To prevent these connection issues, ensure you follow the power on sequence as detailed in the QuickStart guide.