

1 Power on **AVID HD IO interface in rack**

2 Power on **Control Surface**

3 Power on **Dock**

4 Power on **Mac Mini**

IMPORTANT – DO **NOT** TURN ON SPEAKERS YET

Please **turn** over...



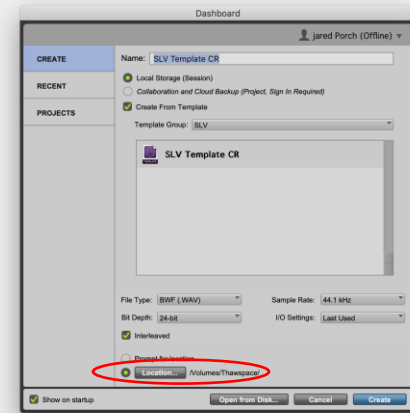
5 Launch Pro Tools



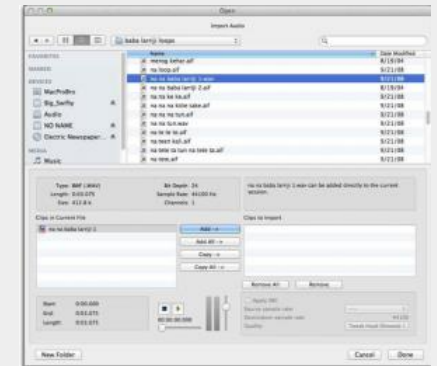
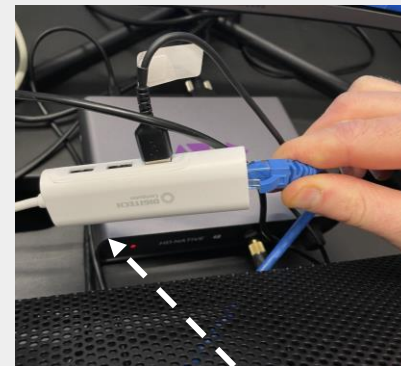
7 Power on speakers **at rear**



6 Create new session from template and **save in Thawspace**



8 Connect your external storage and import or drag and drop audio files to work with: **File>Import>Audio**



USB hub for external drives