



STATE LIBRARY
VICTORIA

What's your story?

Library map

WITH SELF-GUIDED TOUR

Welcome to State Library Victoria

Come inside and discover a world of wonder, curiosity and ideas in Australia's busiest and most popular public library.

Each year, around two million visitors come to experience free events and exhibitions, and to use the Library's unique collection of more than five millions items.

What can I do at the Library?

- Take free daily tours
- Enjoy free exhibitions and events
- Browse a huge range of books and journals on the shelves
- Read newspapers or research your family tree in the Newspapers and Family History Reading Rooms
- Listen to music in the Arts Reading Room
- Access free wi-fi
- Copy, print or scan materials
- Register as a member for greater access to our collections and databases.

Feeling hungry?

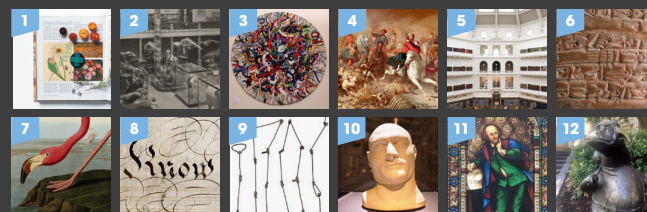
Enjoy a coffee or meal in one of our two onsite cafes – Mr Tulk on La Trobe Street or Guild in the Russell Street Welcome Zone.

Need more information?

- Speak to a staff member at a service point
- Call our inquiry service on 8664 7002
- Visit slv.vic.gov.au

Things to note

- Collection items are for onsite use only
- Bottled water can be taken inside the Library
- You can store large bags in one of our free lockers
- Some rooms are designated 'quiet spaces' for private study.



Don't miss these highlights of the Library's heritage building and collections.

1. Open book

Photographic artwork by Tai Snaith, 2018
Russell Street Welcome Zone

This large-scale artwork, spanning almost 30 metres, was commissioned by State Library Victoria as part of the Library's Vision 2020 redevelopment project. It features playful and curious assemblages of dried flowers, seeds, found objects, family heirlooms and hand-made ceramics that grow out the pages of open books.

2. Redmond Barry Reading Room, 1892

This room once housed the Museum and was filled with fossils and taxidermy. Today you can browse new nonfiction books, magazines and journals on the central shelves.

3. Gordian Knot

Tapestry by Keith Tyson, 2017
Redmond Barry Reading Room

Designed by award-winning artist Keith Tyson, this tapestry by the Australian Tapestry Workshop took a team of weavers 2064 hours over two years. The design brings together elements of biology, technology, cosmology, and mythological and sociological evolution as a reflection of the world. It was gifted to the Library by Elisabeth Murdoch.

4. Black Thursday, February 6th, 1851

Oil painting by William Strutt, 1864
Cowen Gallery

This painting depicts the terrible bushfire that engulfed Victoria only days before the discovery of gold. Many died and the city was filled with dust, smoke and a rain of cinders.

5. Dome ceiling

Designed by architects Bates, Peebles & Smart, 1913
La Trobe Reading Room

When this domed room opened in 1913, it was the largest reinforced concrete dome in the world. It was modelled on the Library of Congress in Washington DC and the British Library's reading room. It is as wide as it is high.

6. Cuneiform tablet

Clay tablet, c. 2050 BC
Dome Galleries, Level 4

This clay tablet is the oldest artefact in the Library's collection. It is written in Sumerian and records taxes paid in sheep and goats. The words were marked on damp clay with a wedged stick (*cunea* is Latin for 'wedge'), and the tablet was then sun-dried or fired.

7. The birds of America

Book by John James Audubon, 1827–38
Dome Galleries, Level 4

One of the largest books in the Library's collection, this rare work contains life-sized paintings of American birds. Audubon's paintings were transferred to copper plates, printed, then hand-coloured.

8. Batman deed

John Batman, 6 June 1835
Dome Galleries, Level 5

Also known as the Batman treaty, this is one of three deeds with which John Batman claimed to have purchased 240,000 hectares of land from Indigenous leaders. The deeds were declared invalid when the land was claimed by the British Crown.

9. Surveyors' chain reputedly used by Robert Hoddle

c. 1837
Dome Galleries, Level 5

This chain consists of 100 links and when fully extended measures 22 yards – the length of a cricket pitch. It is believed to have been used by Melbourne's first Surveyor General, Robert Hoddle, to map out the grid of streets in Melbourne's central business district.

10. Ned Kelly's death mask

c. 1880
Dome Galleries, Level 5

In the 19th century, it was common for plaster 'death masks' to be made of the face and skull of executed criminals. Death masks were often put on display to serve as a reminder of the power of the police force. When Ned was hanged, several death masks were made of his skull.

11. Shakespeare window

Ferguson and Urie, 1862
Dome, Level 6

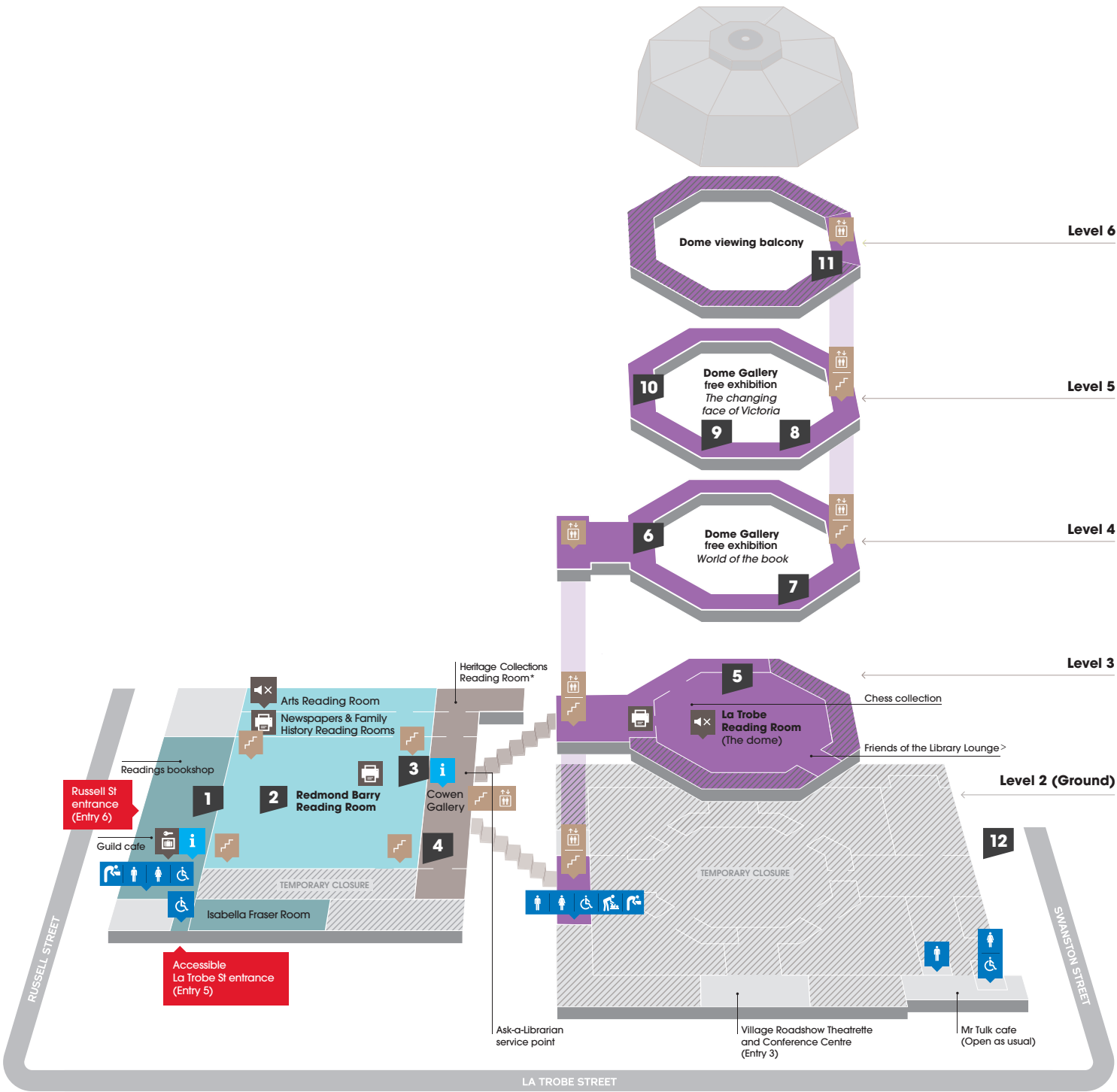
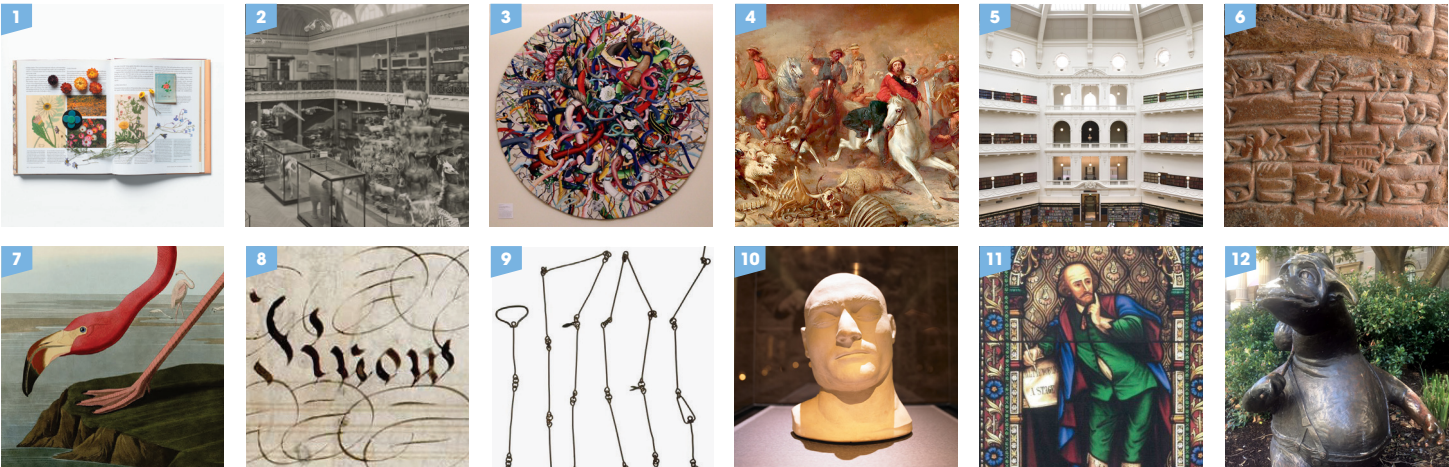
Over 3 metres high, this window is thought to be the first stained-glass window in Victoria with a figurative design. It was originally installed at Coppin's Apollo Music Hall in 1862.

12. The bunyip of Berkeley's Creek

Bronze statue by Ron Brooks, 1994
Library forecourt

This statue is of the titular character from Jenny Wagner's book, *The bunyip of Berkeley's Creek*. From Australian Aboriginal mythology, bunyips are said to lurk in billabongs and waterholes – but this one lives in our garden bed! The sculpture is part of the Scholastic Dromkeen Children's Literature Collection.

See next
page for floor
plan showing
locations.



ZONES	Russell Street Welcome Zone	Collections	The Gateway	The Dome	Swanston Street Welcome Zone
-------	-----------------------------	-------------	-------------	----------	------------------------------

Map key

Male toilets	Wheelchair accessible-toilets	Water fountain	Stairs	Quiet zone	TEMPORARY CLOSURE - Vision 2020 redevelopment
Female toilets	Baby change	Information desk	Lift	Lockers	Print/copy scan
					> Members only * By appointment only