

CATALOGUE

OF

PICTURES

BY

HANS HEYSEN.



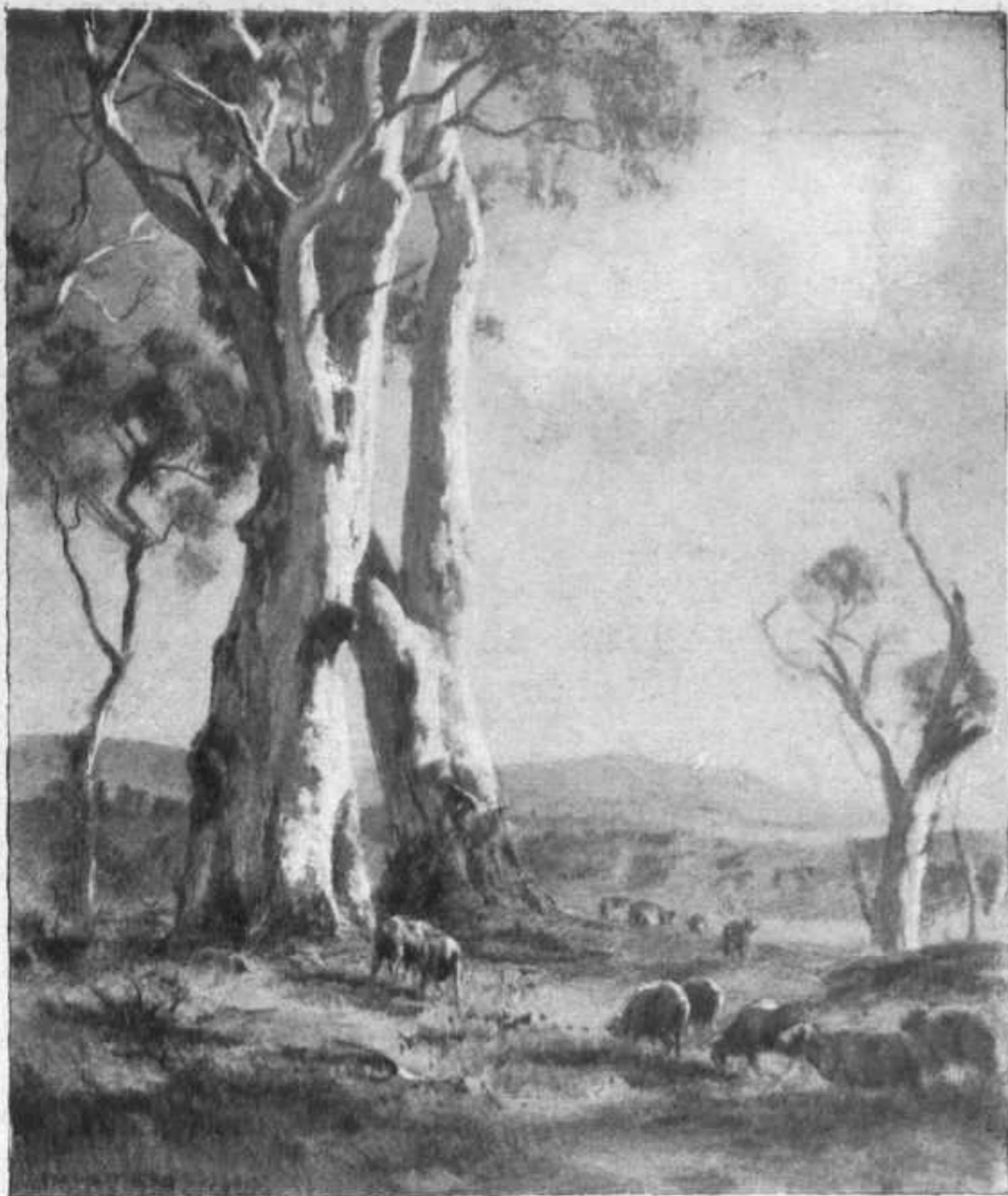
*7024
art
to set. v 6*

MELBOURNE ATHENÆUM,
MARCH 4TH, 1915.

WILLIAM H. GILL,
MANAGER

22631

PUBLIC LIBRARY
11. MAR 1915
OF VICTORIA

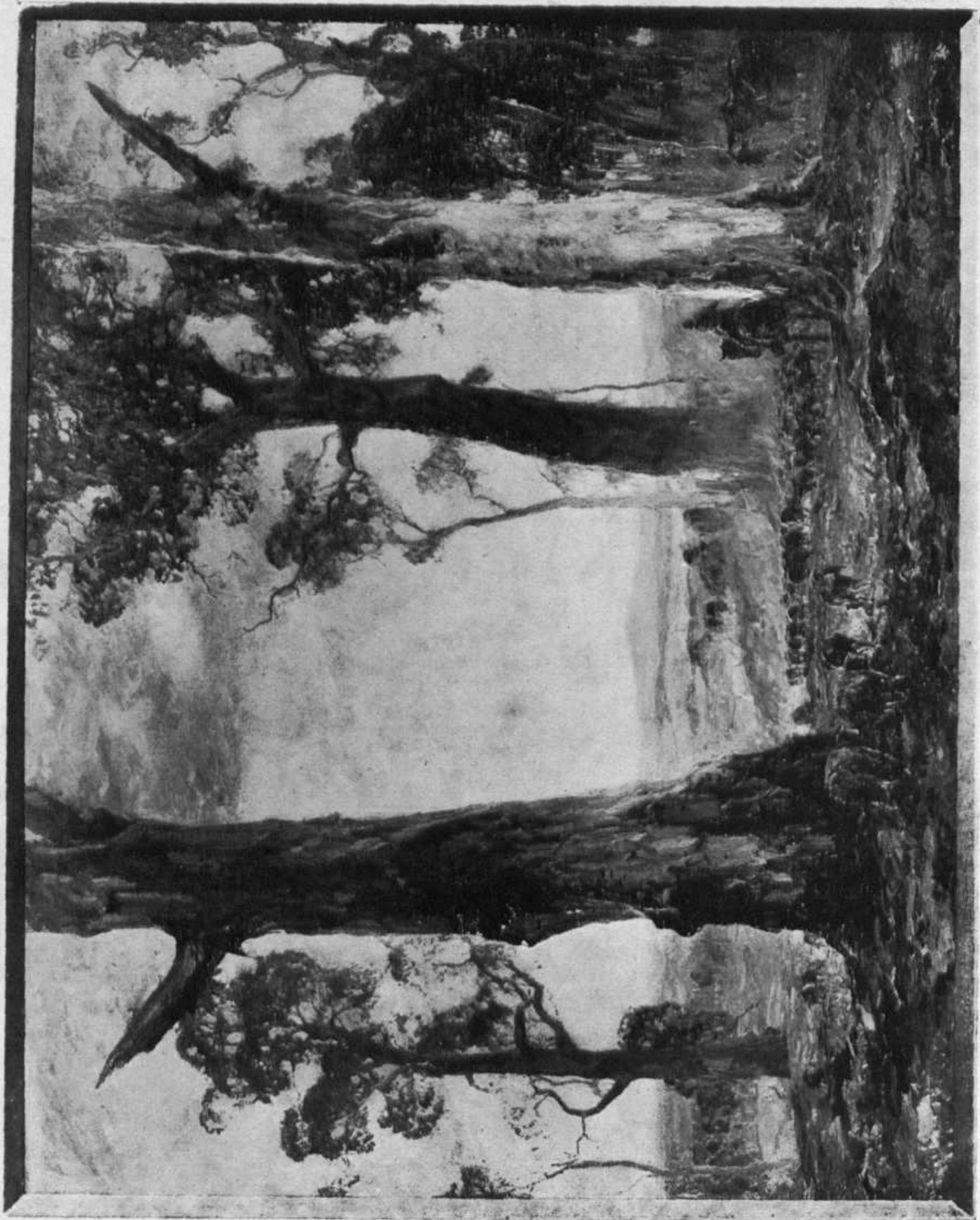


No. A

PICTURES KINDLY LENT BY

MADAME MELBA.

<i>A</i>	"Big Gums and Sheep"	Black and White Drawing
<i>B</i>	"After-Glow"	Water Colour
<i>C</i>	"Gums in Morning Light"	" "
<i>D</i>	"Morning's Mystic Veil"	" "
<i>E</i>	"The Bush Track"	" "
<i>F</i>	"Saplings"	" "
<i>G</i>	"Turkeys"	" "
<i>H</i>	"Hydrangeas"—Coombe Cottage	" "
<i>I</i>	"The Smoker"	Pastel
<i>K</i>	"From the Verandah"—Coombe Cottage	" "
<i>L</i>	"My Parrot"	" "



"IN SUNSET HAZE."

No. 1

61" x 48



"BRONZEWINGS."

No. 3

48" x 32"

OIL PAINTINGS.

NOS.								PRICE GUINEAS
1	In Sunset Haze	400
2	White Gums	400
3	Bronzewings	200
4	The Rainbow	100
5	A Bush Idyll	80
6	Coldstream Pastures	100
7	A Spring Landscape	70
8	Zinnias	80
9	A Color Note	30
10	White Roses	40
11	The Last Glow	50
12	The Hollow Road	50
13	Moonlight	50
14	Spring	70
15	Cloudland	30
16	Yarra Glen	200
17	In Springtime	65



" ZINNIAS."

No. 8

24" x 20"

WATER COLOURS.

NOS.									PRICE GUINEAS
21	Threshing	35
22	Mystic Morn	40
23	Summer Heat	40
24	Windblown	40
25	Pastoral	30
26	White Gums	35
27	Sunlit Space	30
28	Gum Trees	35
29	Summer's Gold	35
30	Hill and Cloud	25
31	Valley Mists	40
32	Bush Fire Haze	30
33	The Threshing Floor	40
34	Early Morn	35



"WHITE GUMS,"

No. 2

63" x 51"



"THE RAINBOW."

No. 4

36" x 28½"

WATER COLOURS.

NOS.							PRICE GUINEAS
35	Travelling Sheep	40
36	A Willow Copse	25
37	Sunrise	25
38	At Sunset						
	(Kindly lent by Her Excellency, Lady Stanley)						
39	The Edge of the Clearing	30
40	Sunbeams and Smoke	30
41	The Grey Veil	40
42	Frost and Sunbeams	35
43	A North Wind	35
44	Saplings (No. 1)	25
45	Saplings (No. 2)	25
46	Black and White	35
47	Young Gums in Sunlight	30
48	Opals	35
49	A Conclave	50
50	Dress Parade	50
51	In the Ranges	110
52	Threshing Peas	60
53	Turkeys	30
54	In the Bush	30
55	Opals (No. 2)	30
56	Opals (No. 3)	30



"A BUSH IDYLL."

No. 5

26½" x 22"

STUDIES.

NOS.						PRICE GUINEAS
1	Labourer, stooping	Pastel 10
2	Labourer, sitting	" 10
3	Horses	" 5
4	Labourer Lighting Pipe	" 10
5	Labourer, sleeping	" 8
6	Labourer, with axe	Chalk 10
7	Landscape	Crayon 10
8	Sheep Grazing	" 10
9	Landscape	" 8
10	Tree Study	" 5
11	Tree Study	" 5
12	Tree Study	" 5
13	Bush Landscape	Pencil 8
14	Landscape, with Trees	" 8
15	Tree Study	" 5
16	Landscape, with Trees	" 12
17	Tree Study	Crayon 5



"THE THRESHING FLOOR."

No. 33

17½" x 15"



"BLACK AND WHITE."

No. 46

15½" x 12½"

